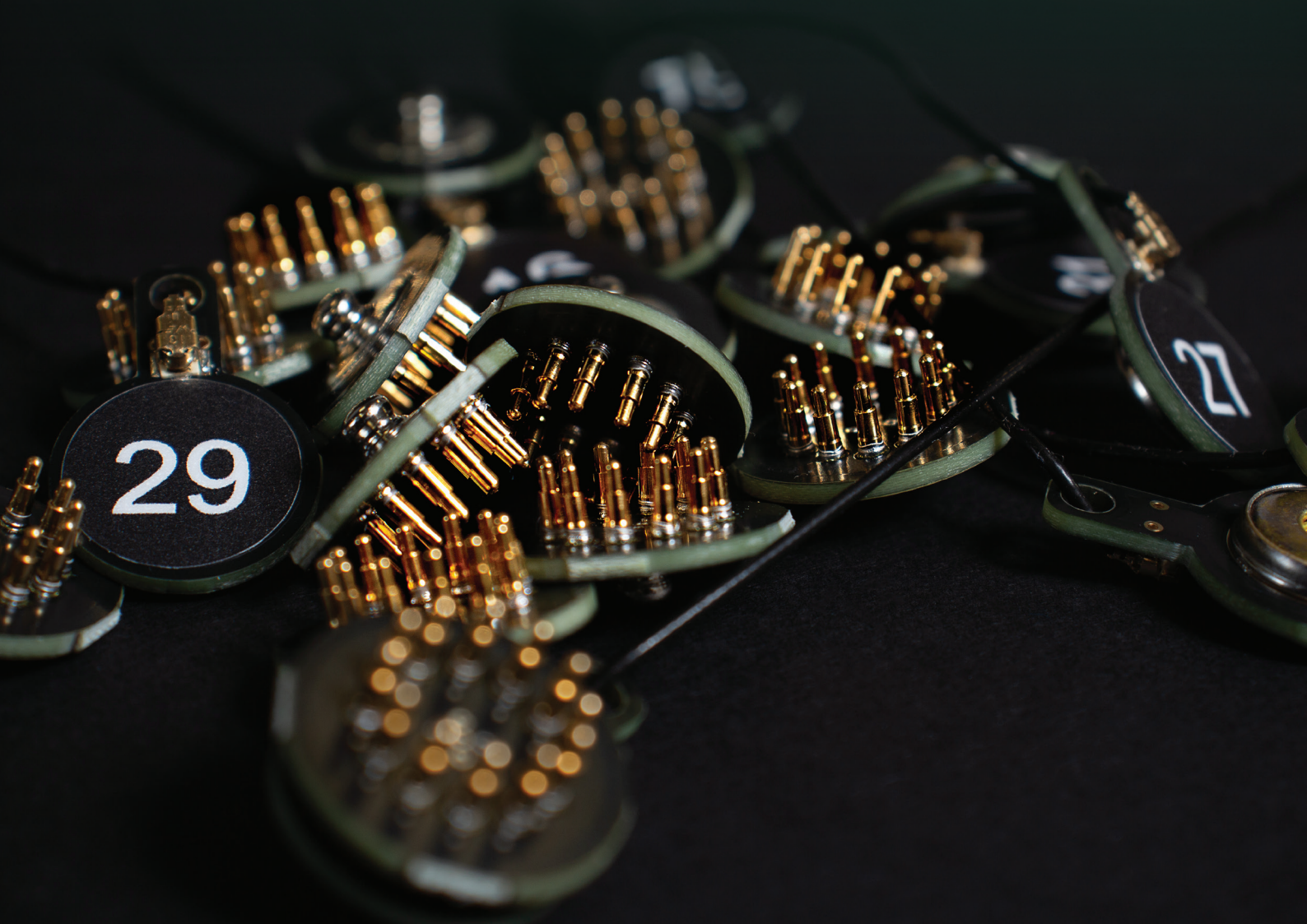


BRAINACCESS[®]

developed by *NEUROtechnology*

AI-enabled electroencephalography (EEG) and hyperscanning solutions



BrainAccess Product Line

BrainAccess product line includes modular hardware + free control software for rapid research & BCI prototyping.



Technical Specifications

Device	BrainAccess Standard Kit	BrainAccess Extended Kit	BrainAccess Extended Kit+	BrainAccess Halo
Number of channels	8	16	32	4
Operating time	up to 6 hours	up to 9 hours	up to 9 hours	up to 9 hours
Sampling frequency	250 Hz			
Connectivity Type	Bluetooth 4.2 (BLE)			
Mass	70 g	85 g	85 g	70 g

Features



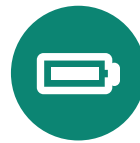
Comfortable headwear



Dry contact electrodes



Wireless and lightweight



Long-lasting battery



Easy setup



Free software included



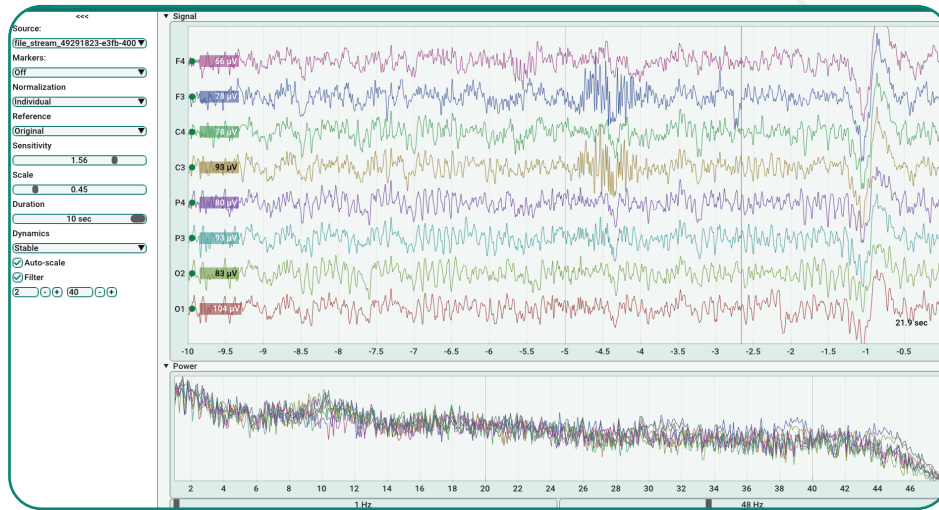
Up to 32-channels



3-axis accelerometer

BrainAccess Software Solutions

The BrainAccess software features the BrainAccess Board, SDK and Mobile App as a comprehensive solution for advanced EEG measurements and a proprietary virtual assistant for a smoother testing process.



BrainAccess Board

Can be used to interface with BrainAccess devices and undertake most of the tasks related to EEG measurements.

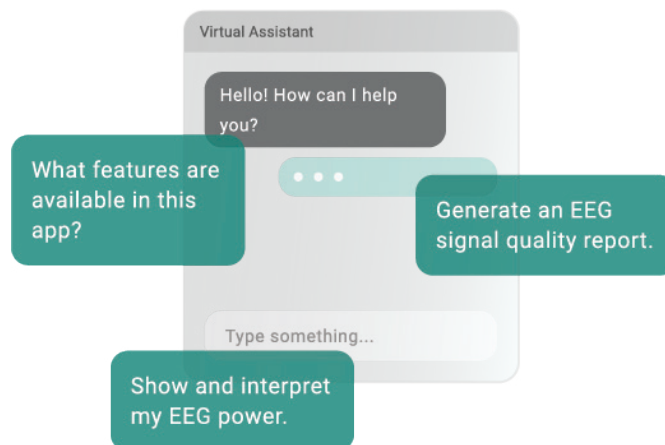
BrainAccess SDK

A collection of libraries for controlling the devices, streaming, and preprocessing EEG data.

BrainAccess Mobile App

An application for Android devices that can be used to collect data from BrainAccess devices.

Virtual Assistance R&D



Applications

BCI & Neurotechnology Research
Multimodal Integration

Education & Teaching
Hyperscanning

Creative & Experimental Art
Rapid Prototyping of Neurotechnology

Contact Us

+370 5 277 3315

brainaccess@neurotechnology.com

Head Office

Laisves av. 125A,
Vilnius, LT-06118,
Lithuania



BrainAccess – where a neuron meets a neuron.
For more information visit <https://www.brainaccess.ai/>