

Quick Start Guide

BRAINACCESS[®] HALO

developed by **NEUROtechnology**



BrainAccess Halo is a fully integrated 4-channel EEG headband developed by Neurotechnology.

It features dry-contact electrodes and Bluetooth connectivity, allowing you to easily record brain signals for **research** and **educational purposes**.

Scan the code to get the full manual:



Table of Contents

Package Contents.4

Safety Notice.5

Device Overview.6

Controls & Indicators8

Wearing the Device9

Connecting the Device.12

Cleaning & Maintenance15

Warranty16

Support17

Disposal & Compliance.18

Company Information.19

Package Contents

- BrainAccess Halo headband ×1
- USB Bluetooth adapter ×1
- USB-C charging cable ×1



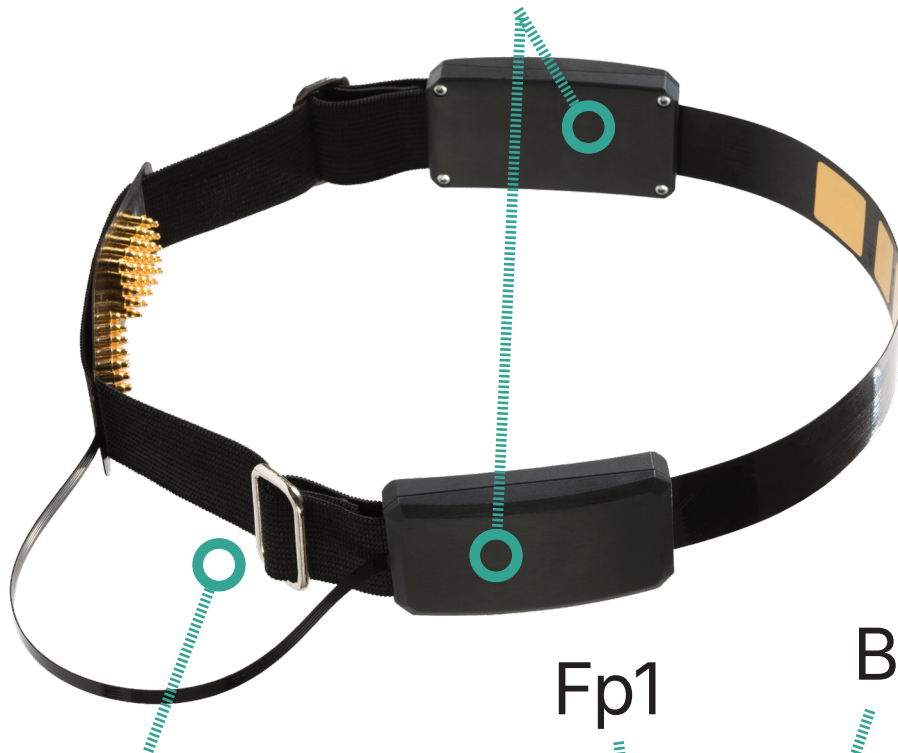
Safety Notice

- Use only for research and education — **not for medical diagnosis or treatment.**
- Keep away from water, heat, and direct sunlight.
- Do not use the device while charging.
- Do not open, modify, or disassemble the device.
- Charge only with standard 5V USB-C chargers.

Device Overview

- 4 EEG channels: Fp1, Fp2, O1, O2.
- Reference electrode: front center of band.
- Bias electrodes: two pads adjacent to the reference electrode.
- Frontal sensors: gold-plated pads (forehead contact).
- Rear sensors: gold-plated spring pins (penetrate hair).
- Battery & amplifier: integrated in side modules.

Battery & Amplifier



O1

O2

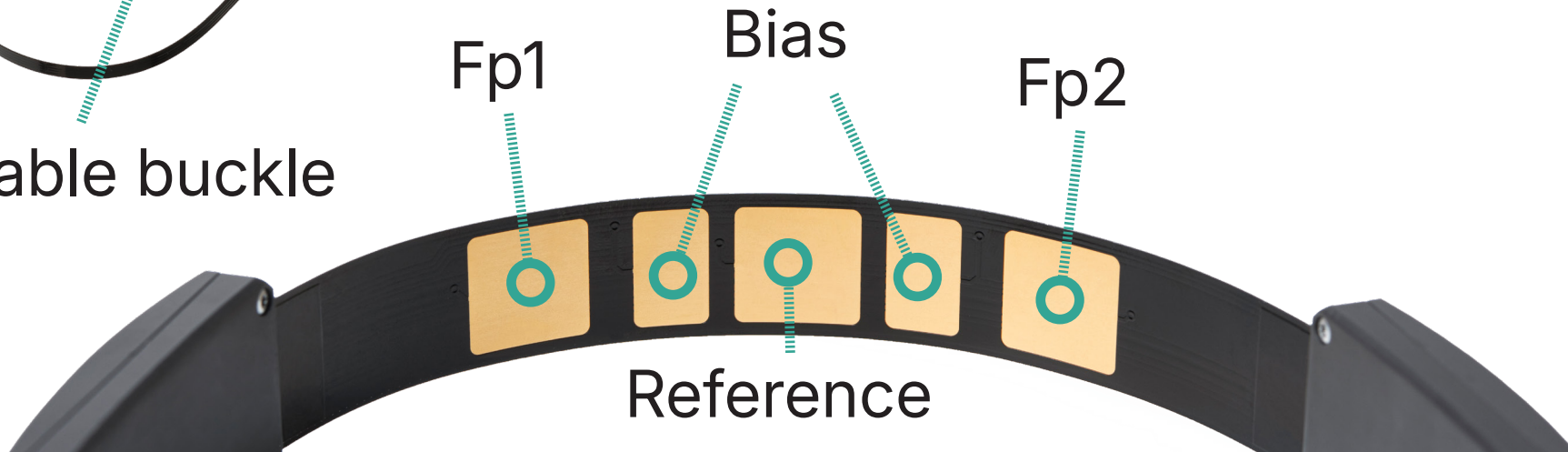
Bias

Fp1

Fp2

Adjustable buckle

Reference



Controls & Indicators

Power button: Hold 2-3s to turn on/off.
Device vibrates on activation.

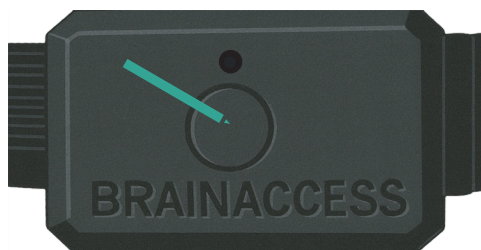
LED indicator:

- Breathing blue → Power on
- Solid blue → Connected
- Fast red blink → Low battery (<15%)
- Breathing red → Charging
- Red off (charging) → Fully charged

Wearing the Device

1. Turn on the Halo. If the LED is red, charge before use.
2. Place the device around your head. Make sure it is oriented correctly, the power button must be on the left side.
3. Adjust the fit using the buckle mechanism until the device sits comfortably. The reference electrode should be aligned with the center of your forehead.
4. Place rear electrodes about 1 cm above the inion and gently move them side to side until pins make skin contact through hair.

①



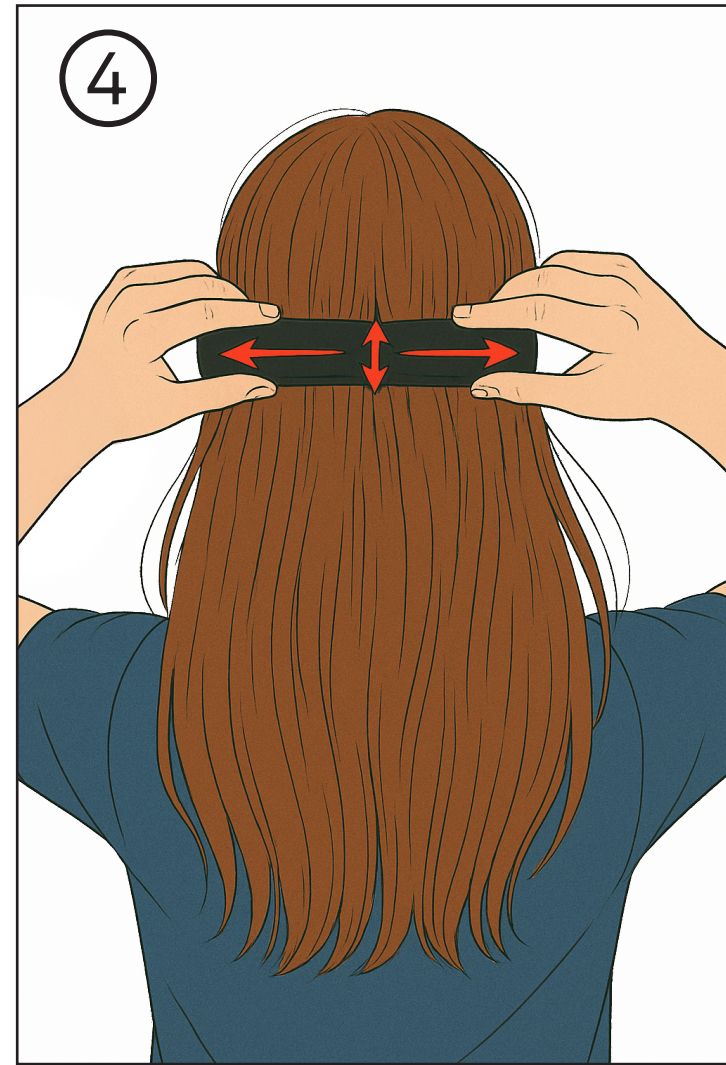
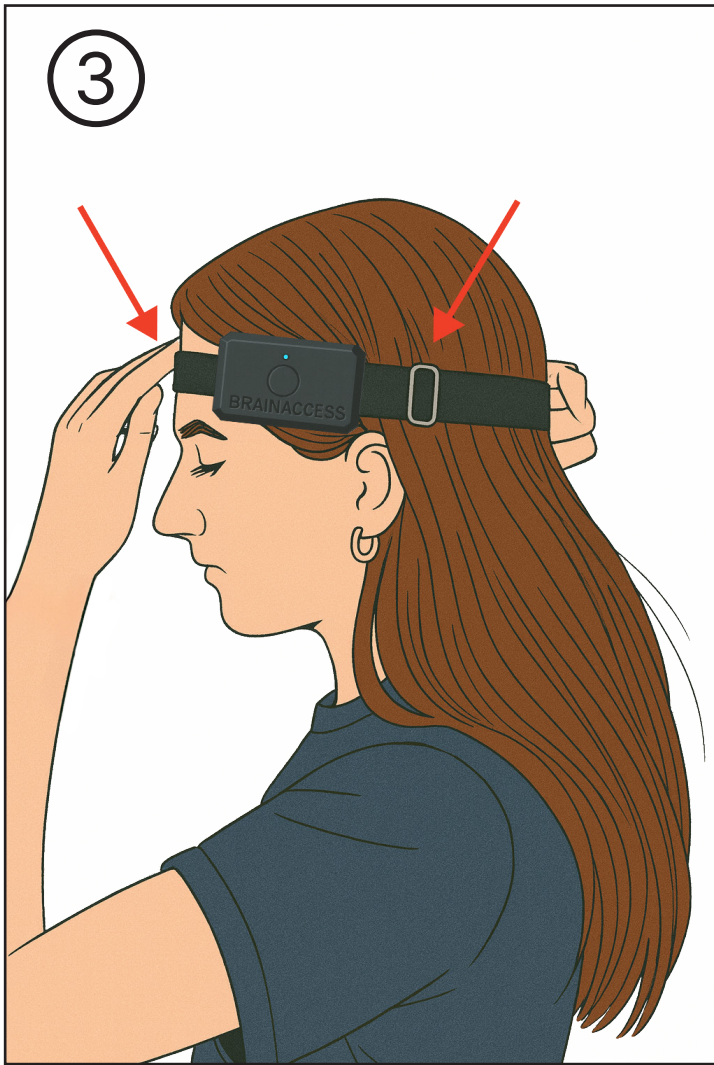
✓ Ready to connect



! Charge the device

②





Connecting the Device

Scan to download



Brainaccess Board

Option 1 – Using a Computer

- Download and install **BrainAccess Board**
- Plug in the Bluetooth adapter (skip if your computer has built-in Bluetooth).
- Turn on the Halo and open BrainAccess Board.
- Select the device (by serial number) → press Connect.
- Start streaming, viewing, or recording EEG data.

Option 2 – Using a Mobile App

- Download **BrainAccess Mobile App** from Google Play (Android 9+).
- Turn on the device and open the app.
- Select the device from the drop-down list.
- Tap Connect to start streaming or saving EEG data.

Scan to download



Brainaccess Mobile

Scan to download



Brainaccess SDK

Option 3 – Advanced SDK Use

Developers can use the **BrainAccess SDK** (C / Python API) for full device control, direct streaming, and integration into custom applications.

Cleaning & Maintenance

- After each use, clean the sensors with **alcohol-free** disinfectant wipes to avoid damaging the black coating on the flexible PCB.
- For rear electrodes, use a small brush slightly moistened with disinfectant.
- Ensure no liquid reaches the battery or amplifier.

Store device in the original package in a dry, cool place.

Warranty

The device is covered by a 1-year limited warranty against defects in materials and workmanship.

Warranty does not cover misuse, modification, or damage caused by unauthorized repair.

Contact brainaccess@neurotechnology.com for warranty service.

Support

Free technical support is available for:

- Device not turning on.
- Charging or connection issues.
- Bluetooth or data streaming problems.

For consulting or experimental assistance, additional service fees may apply.

Contact: brainaccess@neurotechnology.com

Disposal & Compliance

Do not dispose of with household waste.

Return to an authorized collection point according to **EU Directive 2012/19/EU (WEEE)**.

Complies with EU directives **RED 2014/53/EU** and **RoHS 2011/65/EU**.



Company Information

Neurotechnology UAB



Laisvės pr. 125A, Vilnius, LT-06118, Lithuania



+370 5 252 2400



brainaccess@neurotechnology.com



www.brainaccess.ai

BrainAccess Halo is intended
for **research** and **educational** purposes only.
It is **not** a medical device.

© 2025 Neurotechnology UAB. All rights reserved.